
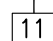


LEGEND

-  TOP CHORD PANEL POINT RIGGING POINT
-  BOTTOM CHORD PANEL POINT RIGGING POINT

GENERAL NOTES

1. THIS PROVIDES A GENERAL GUIDELINE FOR THE TEMPORARY LOADING OF THE CRANEWAY TRUSSES. NO LOADING SHALL EXCEED THE PRESCRIBED LOADING. ALL LOADS SHALL BE REMOVED AS SOON AS NOT REQUIRED.
2. CARE IS REQUIRED FOR PLACING THE RIGGING AS CLOSE AS POSSIBLE TO THE TRUSS PANEL POINTS. THE RIGGING SHOULD NOT HAVE DIRECT CONTACT WITH THE TRUSS MEMBERS BUT SHALL BE WRAPPED IN SOME PROTECTIVE MATERIAL.
3. FOR TOP CHORD LOADING NO STRESS SHALL BE PLACED UPON THE EXISTING ROOF PURLINS. THE RIGGING SHOULD BE PLACED SUCH THAT THERE IS NOT DIRECT CONTACT WITH THE ROOF PURLINS.
4. ALL LOADING WITH THE EXCEPTION OF BRIDLE LOADING IS TO BE HUNG DIRECTLY DOWN AND NOT TO PUT ANY HORIZONTAL LOAD ON THE EXISTING TRUSSES.

ALLOWABLE LOADS

FOR TOP CHORD PANEL POINT RIGGING LOADING ONLY:

1. FOR SYMMETRIC LOADING OF THE TOP CHORD PANEL RIGGING POINTS 1 THROUGH 6 THE MAXIMUM LOAD IS 1000 LBS PER POINT WITH A MAXIMUM OF 4 LOCATIONS FOR A TOTAL OF 4,000 LBS MAXIMUM PER TRUSS.
2. FOR ASYMMETRIC LOADING OF THE TOP CHORD PANEL RIGGING POINTS 1 THROUGH 6 THE MAXIMUM LOAD IS 500 LBS PER POINT. THE MAXIMUM TOTAL LOAD IS 2500 LBS.

FOR BOTTOM CHORD PANEL POINT RIGGING LOADING ONLY:

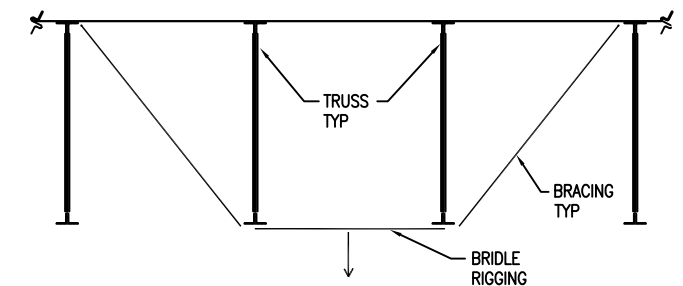
1. FOR SYMMETRIC LOADING OF THE BOTTOM CHORD PANEL RIGGING POINTS 11 THROUGH 15 THE MAXIMUM LOAD IS 250 LBS PER POINT EXCEPT RIGGING POINT 13 WHERE THE MAXIMUM LOAD IS 100 LBS. THE MAXIMUM TOTAL LOAD IS 1000 LBS PER TRUSS.
2. FOR ASYMMETRIC LOADING OF THE BOTTOM CHORD PANEL RIGGING POINTS 11 THROUGH 15 THE MAXIMUM LOAD IS 65 LBS PER POINT EXCEPT RIGGING POINT 13 WHERE THE MAXIMUM LOAD IS 25 LBS. THE MAXIMUM TOTAL LOAD IS 220 LBS.

FOR COMBINED TOP AND BOTTOM CHORD PANEL POINT RIGGING LOADING:

1. FOR THE TOP CHORD RIGGING POINTS 1 THROUGH 6 THE MAXIMUM LOAD IS 500 LBS PER RIGGING POINT. FOR THE BOTTOM CHORD RIGGING POINTS 11 THROUGH 15 THE MAXIMUM LOAD IS 65 LBS PER POINT EXCEPT RIGGING POINT 13 WHERE THE MAXIMUM LOAD IS 25 LBS.

FOR BRIDLE BOTTOM CHORD PANEL POINT RIGGING LOADING:

1. FOR BRIDLE LOADING OF THE BOTTOM CHORD RIGGING POINTS 11, 12, 14 AND 15 THE MAXIMUM LOAD IS 120 LBS PER POINT WITH A MAXIMUM OF 2 BRIDLE LOADS PER TRUSS WHEN LOADED SYMMETRICALLY. NO BRIDLE LOADING IS ALLOWED ON RIGGING POINT 13. BRIDLE LOADING WILL REQUIRE THE ADDITION OF DIAGONAL (APPROXIMATELY 45°) CABLE BRACING FROM THE BRIDLE CONNECTION AT EACH TRUSS TO AN EXISTING ROOF PURLIN. THERE SHALL BE NO SLACK IN THE DIAGONAL CABLE.



SCHMATIC ELEVATION BRIDLE RIGGING

1 ALLOWABLE TEMPORARY LOADING VALUES AND LOCATIONS FOR TYPICAL CRANE BAY TRUSSES
SCALE: 1/4"=1'-0"

CRANEWAY TYPICAL TRUSS
ALLOWABLE TEMPORARY LOADS
AND LOCATIONS

CRANEWAY
TRUSSES -
ALLOWABLE
LOADING

DATE: 03/12/15
SCALE: NONE

S-CTL1